



TREA Newsletter | November 2024

Bonnie Walker <txrea@memberclicks-mail.net>
Reply-To: bwalker@txrea.com
To: khyde@txrea.com

Sat, Nov 23, 2024 at 2:34 AM



HOME | BENEFITS | JOB BOARD | SPONSORS | BLOG



Enjoy Your Holiday Break 🍪🦃

We are deeply grateful for each of our dedicated TREA members. Your support and commitment help strengthen rural education across Texas. Your passion and partnership encourage us to champion and advocate for the educators and students from each of your districts and ESCs.

This newsletter contains so many updates, reminders, and celebrations. Please read it through its entirety so won't miss out on any of the great opportunities available to you through your TREA membership.

Have a wonderful Thanksgiving!

It's Almost Time ⌚

We're excited to announce that registration for our annual conference will soon be open! Keep an eye on your email for our official announcement, which will include all the details on how to register. Alongside conference registration, this announcement will contain links for Of The Year Awards nominations, scholarship applications, art contest entries, golf tournament registration, and hotel booking information.

Did you know your school board can receive their board training at TREA's Annual Conference and your staff can receive up to 10 hours of CE's? So many of you wear multiple hats in your district and community, that's why we go to great lengths to make our conference a family friendly event. Bring your spouse, kids, etc. for the non education activities. Don't miss out – start planning your conference experience now!

- [2025 Annual Conference](#) | June 22-25 (Member & Non-Member Rates)
- [Conference Hotel Reservations](#)
- [Student Scholarship Application](#)
- [Of The Year Award Nominations](#) | School Board, Superintendent, Principal, Teacher, Paraprofessional
- [Art Contest Application](#) | Grades 3-12
- [Call for Presentations](#)
- [Golf Tournament](#) | Forest Creek



Other Events Coming Up

- [Rural Schools Spring Conference](#) | February 25-26 TREA supports with ESC 13 for this event
- [Members Celebration Dinner](#) | January 26 @5pm Invitation Only Event for TREA Members & Diamond Sponsors
- [Legislative Day at the Capitol](#) | Late February TBA A dinner will be held the night before the event and a hotel block will be available



NREA Elections | VOTE for Jeff Byrd



Mr. Jeff Byrd, TREA Immediate Past President and Superintendent of Dalhart ISD has been nominated for Rural School Administrator Representative on the NREA Executive Committee.

Voting will open in early December. Each current TREA member district and ESC is allowed *one vote.

Everyone should receive the email from NREA that will include the voting link. If you do not receive it by December 10 please let us know. We will send a reminder once voting is open. Voting will close January 1. Let's continue our great representation at the national level by voting.

*multi person NREA memberships get 7 votes

Download Our New Membership App

NEW MEMBER MOBILE APP!
Search for "TXREA"

Sign in using your [TREA membership login!](#)

If you are experiencing any issues, have suggestions, or need help, contact [Maverick Walker!](#)

GET IT ON **Google Play**

Download on the **App Store**

Introducing our brand new **Member App** w/ integrated Conference App! The app is now live on all platforms and can be found by searching "TXREA". Your login is associated with your TREA membership login! We are very excited to offer this as it is a fast and easy way to lookup contacts, see what is going on at TREA, and be the first to know about any events coming up. Please download the app, login to see all the features, and turn on notifications to get important messages from us. If you have any issues, suggestions, or need help, reach out to [Maverick Walker \(mwalker@txrea.com\)](mailto:mwalker@txrea.com).



Stay Connected with Us on Social Media

We're expanding our social media presence, and we want YOU to be a part of it! Follow us on Facebook, X, and LinkedIn to stay up-to-date on the latest news, events, and insights that matter most to rural education. Your interaction is key to building a stronger, more connected community, so don't forget to like, comment,

and share! Join the conversation, share your thoughts, and be the first to know about exciting updates from TREA. Let's make an impact together – follow us today!



TREA Public Relations Program for ISDs

For the past 32 years, TREA has been committed to providing support for rural public schools in Texas! We continue to expand that support through new benefits & services. The TREA [public relations program](#) for 2024-2025 can offer a variety of services to create a customized package. The cost is \$2800 per year for TREA Member Districts, \$4,000 per year for non-member districts. This opportunity is limited to seven school districts. Contact [Maverick Walker](#) for more information.



District Vulnerability Assessment

Brian Stroman, superintendent at Bloomberg ISD and TREA Foundation Board Member, will assist Superintendents at TREA member districts with a DVA free of charge. This is an extremely valuable service. Bloomberg ISD was a pilot district and very successful. He is conducting these consultations with the appreciation of TEA, in that the districts Brian has worked with are extremely more prepared to conduct the DVA than those that haven't. [Email](#) or call Bill Tarleton, 254-602-2056 for more information.

TREA Buyers Guide Now Available

We are thrilled to release the 2024-2025 TREA Buyers Guide! This guide features businesses that proudly support Texas rural schools as TREA annual sponsors. Each company sponsors at distinct levels of giving, as outlined in the sponsorship tiers. We encourage you to explore the guide and support these organizations that have demonstrated their commitment to the success of Texas rural schools. Access the guide [here](#) and connect with companies that make a difference in our rural communities!

New TREA Sponsors



GOLD SPONSOR | Since 1981, [Kraftsman](#) has set the industry standard and is recognized for quality when it comes to building exceptional fun. We are the turnkey service provider of planning, designing, and implementing commercial playground equipment, splash pads, shade structures, park furnishings and more that are safe, durable, and enjoyable. Additionally, we partner with our clients at the fundamental levels of their needs—whether they be equipment sales, delivery, installation, safety inspections, upgrades, or repairs. We understand what appeals to different age groups and individuals to ensure joy and laughter is shared for years to come.



National Career Academy Coalition

COLLEGE CAREER LIFE

SILVER SPONSOR | Since 1996, [NCAC](#) the National Career Academy Coalition has championed the career academy model, through providing collaborative support and resources for existing and emerging career academies and pathways. These career academies and pathways are essential in bridging the gap between education and the workforce. By embedding these systems within school districts and communities, students gain practical experience, earn college credits and industry credentials, and demonstrate increased levels of engagement and achievement; similarly, educator retention and expertise increase through collaborative networks of support.

We are the recognized thought leader in college and career success. Utilizing international experts and products, NCAC leads education and community leaders through the design of customized school blueprints framed by the National Standards of Practice. We are honored to partner with your school, district, and community in changing young lives, transforming school systems, and strengthening economic prosperity; please visit www.ncacinc.com, or email me, to learn more.



WEATHERSHIELD ROOFING & SHEETMETAL

A ROOFING CORP OF AMERICA COMPANY

GOLD SPONSOR | At [Weathershield Roofing & Sheetmetal](#) we believe that there's no job too big for us to accomplish. Whether you're looking for basic roof restoration help or a complete commercial roofing project manager, we are here to serve you. Weathershield is here to help you protect your investments however you need us.



TriVigil

WE PROTECT EDUCATION

SILVER SPONSOR | [TriVigil](#): Your Trusted Partner in Cybersecurity for Education. TriVigil is dedicated to providing tailored, comprehensive cybersecurity solutions designed to address the unique challenges faced by educational institutions across the country. With a focus on people-centric security, policy-driven protection, and technology-optimized efficiency, TriVigil helps organizations build resilient defenses against today's complex cyber threats. Our services encompass strategic leadership, compliance support, and advanced technology solutions, ensuring institutions stay secure, compliant, and prepared for the future.

Quick Start Program

TriVigil's [Quick Start Program](#) offers an immediate, scalable solution for institutions in need of fast, effective cybersecurity support. This program delivers rapid assessments, identifies security gaps, and establishes foundational protections, helping organizations quickly elevate their cyber defenses. Perfect for institutions in transition or facing urgent cybersecurity needs, Quick Start provides the expertise and tools to build a robust security posture without delay.

TREA Partners



A special invitation from the REC Foundation:

Thanks to the generosity of its sponsors and donors, the Robotics Education and Competition Foundation ([REC Foundation](#)) is proud to offer VEX Robotics grants for the 2024-2025 season. VEX IQ Robotics Competition and VEX V5 Robotics Competition grant

What's included in the Grant:

- (3) Robot kits
- (3) REC Foundation annual team registrations
- Full field perimeter and tiles
- 2024-2025 Game Elements set
- \$100 Travel Stipend per granted team*
- Event Reimbursement (up to \$75) per granted team*

applications are currently open. *Grants are available on a first come, first served basis.*

Who May Be Eligible

New teams must be composed of Middle or High School students, as defined by the game manual. The game manual states that students eligible to be on a VEX IQ Team must be born after May 1, 2009 (they must be 15 years old or younger at the 2025 VEX Robotics World Championship). In the case of a VEX V5 team, students must be born after May 1, 2005 (they must be 19 years old or younger at the 2025 VEX Robotics World Championship).

Eligibility may also be granted based on a disability that has delayed a student's education by at least one year.

\$300 Coach Stipend per granted team*

*Please read full Terms & Conditions upon receiving grant approval to ensure that terms are met.

Additionally, teams must consist primarily of students who identify as an under-represented population in the STEM workforce. Examples include teams composed of individuals who:

- Have low-socioeconomic status
- Identify as Black, Hispanic, or Native American/Indigenous
- Reside in a rural area
- Are women (A.K.A. Girl Powered teams composed of 50% or more females)

The **deadline for team registration for Season 2024/25 is December 13, 2024.**

Application: www.robotevents.com/grants.



Support for your new teachers today.

At [UTeach Professional Development](#), we understand that support for new teachers in their early years is critical for their success...and yours. UTeach PD is here to help with a range of new teacher support offerings designed for teachers in *all* grade levels and content areas. Our offerings make professional learning effective, affordable, and easy to integrate...and are available for para-professionals as well!

Best of all, our offerings are fully reimbursed by the Texas Education Agency (TEA) upon completion =

New Teacher Support Program

Our comprehensive New Teacher Support program provides a flexible way for campus or district administrative staff to support new teachers. An integral part of this program is its emphasis on one-on-one and small group intensive support, providing participants with the basics of classroom management, best practices for implementing blended learning, and teacher wellness. This is open to teachers in all grade levels and content areas.

Teachers receive:

- Up to 75 hours of support
- Small group check-ins
- 20 hours of CPE credit
- Certificate of completion
- Digital badge

no long-term cost to your district.

- T-TESS evaluation support, and more!



Attention all students and teachers! The **Take Care of Texas Video Contest** is now open until **December 6th!** Students can submit a 30-second video that shows **positive** ways to take care of Texas and conserve natural resources. Six students with the most creative and compelling videos will **win up to \$2,500 in college scholarships** or **up to \$800 in gift cards** for camera gear! Needing inspiration? Check out the **previous winning videos**. Don't forget to spread the word! You can download our contest flyer to share with your friends and colleagues. [Get more info here.](#)

Texas Space Grant Consortium

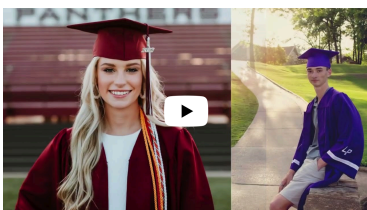


Space Teams Labs is a 100% [NASA-funded program](#).

Space Teams Labs will provide middle- and high-school-aged students (grades 6-12)* a virtual portal to learn, collaborate, and engage in space mission design and simulation. Space mission virtual reality (VR) demos, such as spacewalking on the International Space Station, exploring the surface of any planet or moon, or experiencing artificial gravity on a rotating space station, will inspire and engage students to pursue STEM. In this collaborative space system virtual reality STEM educational experience, students will...

- collaborate, communicate, problem-solve and work as a team
- conduct a human space exploration mission
- build their own spacecraft
- travel across the vast expanses of space
- create their own base
- explore a new planet
- find resources to sustain mission habitability

TREA | Leading the Way for Rural Schools



With over 30 years of unwavering leadership, advocacy, and sustainability for rural schools, TREA maintains a steadfast commitment to supporting staff, students, and administrators in rural districts. Our members are part of a dynamic community that fosters collaboration and innovation. We are a network of like-minded individuals committed to enhancing rural education, sharing best practices, and overcoming challenges together. Don't miss out on this incredible opportunity to be

PLAY VIDEO >>>

part of a group that is making a lasting impact in the lives of students and the future of rural education. Join TREA today and experience the power of unity and progress!

TREA Job Board

Don't forget to use TREA's [Job Board](#) for any and all of your district/ESC postings. It's part of your membership benefits! TREA Members reach out to [Kasey Hyde](#) for the code. Contact [Bonnie Walker](#) for questions about the Job Board.

TEXAS RURAL EDUCATION ASSOCIATION

7415 Southwest Pkwy Bldg 6, Ste 500 #243 | Austin, TX 78735 | www.txrea.com

Bill Tarleton
Executive Director

tel:254.602.2056

btarleton@txrea.com

Bonnie Walker
Director of Operations

tel:512.415.1646

bwalker@txrea.com

Kasey Hyde
Coordinator of Member Services

tel:877.567.8732 ext. 3

khyde@txrea.com

Maverick Walker
Coordinator of Marketing & Events

tel:512.757.2508

mwalker@txrea.com



TREA DIAMOND SPONSORS



CONNECT WITH TREA



This email was sent to khyde@txrea.com by bwalker@txrea.com

Texas Rural Education Association • 7415 Southwest Pkwy Bldg 6, Ste 500 #243, Austin, Texas 78735, United States • 254-602-2056

[Remove My Email or Manage Preferences](#) • [Privacy Policy](#)

powered by MemberClicks