

# NEWSLETTER

Rural Roots | Global Impact | TREA 2024-2025



[HOME](#) | [BENEFITS](#) | [JOB BOARD](#) | [SPONSORS](#)

## 2024 - 2025 Theme Announcement & Logo Reveal

Welcome to the new membership year of the Texas Rural Education Association! We're always excited to kick off the new year and introduce the theme, logo, and board of directors. This year's theme, "Rural Roots, Global Impact," was chosen by our president, Dr. James Young (Kemp ISD). The logo represents our commitment to rural education and to having a positive impact in districts and communities across the state. Our team has already been hard at work planning annual events, including our TREA Annual Conference, Members Dinner celebration and Day at the Capitol in 2025—a pivotal legislative year. In the next couple of months, we will be sending info regarding conference registration, scholarship applications, art contest, Of the Year nominations, and more. As the largest, most influential network of rural school districts in Texas and the state affiliate of the NREA, we're continuously striving to enhance the services and benefits available to our members. We look forward to working together over the next year and please don't hesitate to reach out. Here's to a fantastic year ahead!



## 2024 - 2025 New Board Members | Executive Committee Officers | Directors



**PRESIDENT**

James Young | Kemp ISD



**PRESIDENT-ELECT**

Jason Marshall | Palestine ISD



**VICE PRESIDENT**

David Hayward | Damon ISD



See all the 2024 - 2025 Board of Directors [here](#).

[TREA Legislative Committee](#) | [TREA Legislative Priorities](#)

---

## TREA Public Relations Program for ISDs

For the past 32 years, TREA has been committed to providing support for rural public schools in Texas! We continue to expand that support through new benefits & services. The TREA [public relations program](#) for 2024-2025 can offer a variety of services to create a customized package. The cost is \$2800 per year for TREA Member Districts, \$4,000 per year for non-member districts. This opportunity is limited to seven school districts. Contact [Maverick Walker](#) for more information.



---

## District Vulnerability Assessment

Brian Stroman, superintendent at Bloomburg ISD and TREA Foundation Board Member, will assist Superintendents at TREA member districts with a DVA free of charge. This is an extremely valuable service. Bloomburg ISD was a pilot district and very successful. He is conducting these consultations with the appreciation of TEA, in that the districts Brian has worked with are extremely more prepared to conduct the DVA than those that haven't. [Email](#) or call Bill Tarleton, 254-602-2056 for more information.

---

## TREA Partners



### Start a Robotics Program at Your School:

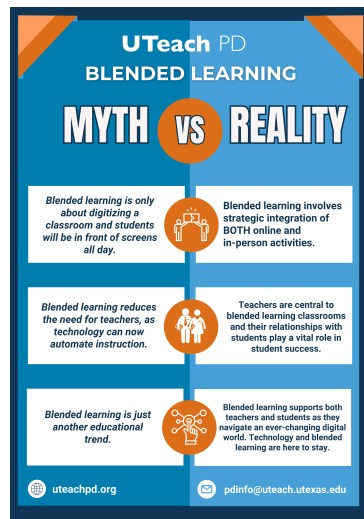
TREA supports and collaborates with the [Robotics Education & Competition \(REC\) Foundation's](#) efforts under the Texas High School Robotics Initiative. REC Foundation will be setting aside a large number of grants specifically available for TREA member districts. These grants have a value of up to \$3,750 each plus guidance on how to proceed once the grant is received. Remember that the unique aspect of the RECF-VEX competition is that the Robotics Team Sponsor does not have to have a technical background at all. It is a student-centered process.

Application link: <https://www.robotevents.com/grants>  
[Contact](#) Raul or Bobbi for more info.



## Celebrate Texas Teachers' Day With Us!

- They say those who can't, teach. And they're right. [But not in the way they intend it.](#)
- Learn how you can join #TeachersCan in honoring teachers for [Texas Teachers' Day](#).
- Join the statewide #TeachersCan [DonorsChoose campaign](#) as a match donor.

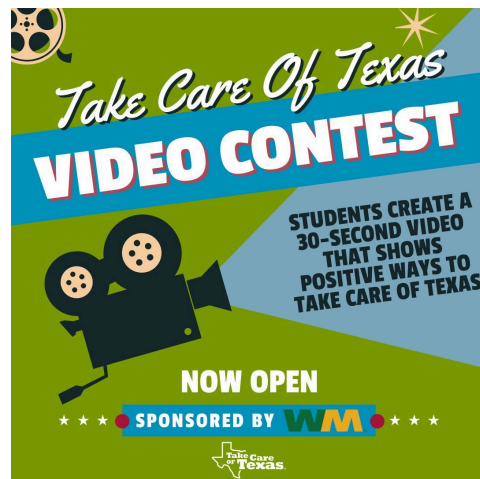


Uteach Blended Learning PD combines technology-driven learning with teacher-facilitated instruction to maximize personalized learning experiences for students, encouraging educators to rethink class structure, use of time, and allocation of resources. Combining the best instructional strategies with the growing importance of technology, teachers can enhance individual student engagement and outcomes.

While blended learning is proven to boost teacher retention and confidence surrounding tech in the classroom, there are many misconceptions about this integration.

### New Course: Artificial Intelligence (AI) in Blended Learning Classrooms

Uteach PD is excited to launch a brand-new course: **Artificial Intelligence (AI) in Blended Learning Classrooms**. This course, created by University of Texas at Austin Associate Professor of Practice Kelli Allen, explores how AI can customize learning for students and support educators with routine tasks. Participants will discover and experiment with various AI tools designed to enhance blended learning environments and improve instructional practices. If you are interested in staying ahead of the AI curve, we invite you to join one of our brief information sessions with Kelli to learn more! [Click here](#) for more information, to register for courses, and to hear August Blended Byte.



Attention all students and teachers! The [Take Care of Texas Video Contest](#) is now open until **December 6th!** Students can submit a 30-second video that shows **positive** ways to take care of Texas and conserve natural resources. Six students with the most creative and compelling videos will win up to \$2,500 in college scholarships or up to \$800 in gift cards for camera gear! Needing inspiration? Check out the [previous winning videos](#). Don't forget to spread the word! You can download our contest flyer to share with your friends and colleagues. [Get more info here.](#)



Department of Education Webinar:  
**REGISTER & SHARE | Bus Tour Briefing | 9/25; 3PM**  
 With the 2024 U.S. Department of Education Back to School Bus Tour now in the rearview mirror, we would love to convene to share some highlights from Secretary Cardona's stops, as well as the many supplemental events senior staff hosted in each of the 5 states. Please join us on Wednesday, September 25 at



Education Innovation and Research Webinar:  
**Leveraging Evaluators to Enhance Projects | Thursday, 9/26; 2-3PM ET**  
 Evaluators can be a great asset to many components of innovative education projects. This webinar will feature EIR grantees and evaluators discussing the ways in which they partner during different phases of a grant project. The panel will discuss how evaluators can enhance project work around fidelity of

3pm for a recap of the announcements and takeaways from our conversations with a broad array of national, state, and local stakeholders. [Register here.](#)

implementation, data collection, and even program planning. [Learn more here.](#) [Register here.](#)

---

## TREA Sponsors

**Renaissance**  
**See Every Student.**

**BRONZE SPONSOR** | [Renaissance](#) is a global leader in assessment, reading, math, and early literacy solutions for pre-K–12 schools and districts. We are committed to providing educators with resources to help students build a strong foundation for success. Our portfolio includes solutions for assessment, practice, data-driven insights, and teacher-facilitated instructional delivery.

---

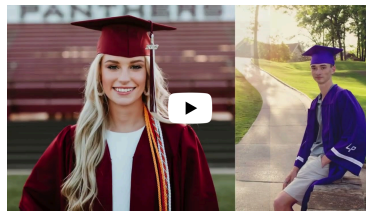
**teachworthy**  
A CAPTURING KIDS' HEARTS PARTNER

In case you missed it on 9/17, teacher shortages webinar with Teachworthy. Link:

<https://us02web.zoom.us/rec/share/6QNhVP1Ut4zQ1iGwpTvYuvRtRROULTNqjO2AcRpBOyr6QS3HKjaLqWAWmdzkDCSs.KmlwajzVONqBATiw>

---

## TREA | Leading the Way for Rural Schools



PLAY VIDEO >>>

With over 30 years of unwavering leadership, advocacy, and sustainability for rural schools, TREA maintains a steadfast commitment to supporting staff, students, and administrators in rural districts. Our members are part of a dynamic community that fosters collaboration and innovation. We are a network of like-minded individuals committed to enhancing rural education, sharing best practices, and overcoming challenges together. Don't miss out on this incredible opportunity to be part of a group that is making a lasting impact in the lives of students and the future of rural education. Join TREA today and experience the power of unity and progress!

---

## TREA Job Board

Don't forget to use TREA's [Job Board](#) for any and all of your district/ESC postings. It's part of your membership benefits! TREA Members reach out to [Kasey Hyde](#) for the code. Contact [Bonnie Walker](#) for questions about the Job Board.

---

### TEXAS RURAL EDUCATION ASSOCIATION

7415 Southwest Pkwy Bldg 6, Ste 500 #243 | Austin, TX 78735 | [www.txrea.com](http://www.txrea.com)

Bill Tarleton  
Executive Director  
tel:254.602.2056  
[btarleton@txrea.com](mailto:btarleton@txrea.com)

Bonnie Walker  
Director of Operations  
tel:512.415.1646  
[bwalker@txrea.com](mailto:bwalker@txrea.com)

Kasey Hyde  
Coordinator of Member  
Services  
tel:877.567.8732 ext. 3  
[khyde@txrea.com](mailto:khyde@txrea.com)

Maverick Walker  
Coordinator of Marketing &  
Events  
tel:512.757.2508  
[mwalker@txrea.com](mailto:mwalker@txrea.com)

---



## TREA DIAMOND SPONSORS



CONNECT WITH TREA

