



TEXAS RURAL EDUCATION ASSOCIATION

NEWSLETTER

Leadership | Advocacy | Sustainability



MEMBERS ONLY

SPONSORS

JOB BOARD

BLOG



Coming back from the Thanksgiving break we hope everyone was able to enjoy some time with family and friends. During this time of year while we are all focused on thankfulness we extend our heartfelt gratitude to each one of you for renewing your membership or partnership with TREA. Your continued support is vital to the success of the organization, and truly impacts the work we do together.



Today is "Giving Tuesday" and on this special day of generosity, we invite you to consider contributing to our [scholarship fund](#). Your donations will play a crucial role in empowering deserving students to pursue their education and make a positive impact in their communities.

Checkout the [scholarship video](#) from the 2023 winners and see how your donations makes a difference.

FORMS NOW OPEN

Are you ready for 2024? It's time to start submitting entries for the [Student Scholarships](#), [Of the Year Nominations](#), [Student Art Contest](#), and [Session Proposals](#) for Conference. During the 2023 conference we added a Research Symposium Strand. We will offer this symposium again and you may [submit proposals](#) on the call for presentations form. The scholarship link was emailed to Superintendents from current TREA member districts. If you didn't receive the scholarship link please click the graphic below to reach out to [Kasey](#).



NREA CONFERENCE | FOTPS DINNER | UPCOMING EVENTS

Prior to the Thanksgiving break TREA staff and officers attended several events across the nation. TREA had great representation at the NREA Annual Conference held in Chattanooga, TN. Attendees from across the country had the opportunity to discover the latest rural innovations, best practices, research, and more.



Executive Director, Bill Tarleton attended the ESC Regions 12, 13 and 20 RAC Symposium and the Texas Tech University Rural Ed. Listening Tour at Region 13. TREA was also happy to support FOTPS at their Awards Banquet held in Waco.



We are preparing for the upcoming *TREA Annual Members Appreciation Dinner* to be held during MidWinter. If you are a current TREA member or Diamond Sponsor and did not receive your invitation, please let [Bonnie](#) know.



TREA Partners with DHEDF

The Mission of the Dee Howard International Education Foundation (DHEDF) is to develop (in collaboration with others) programming, resources, curriculum, and initiatives to engage primarily underserved Pre-K thru 12 students in STEAM learning based on the use of automotive and/or aeronautical project-based learning pathways.

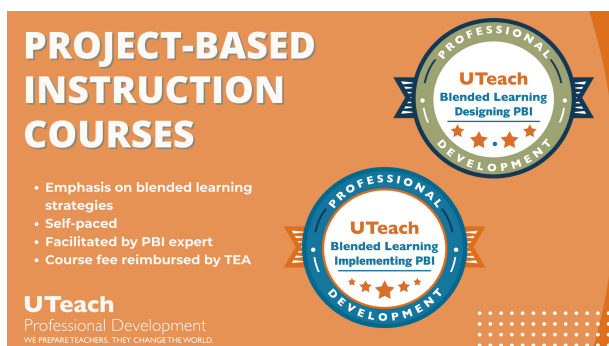
All resources offered to our schools are at no charge to the schools, are delivered virtually, and are posted on private pages on our website accessible by our participating schools. Our role is to make resources available to the schools, what the schools use, and how they use them is totally up to the schools. Find out more on our [blog](#).



TCEQ | Video Contest | Art Contest

The Video Contest closes **December 1**, more info can be found at <https://takecareoftexas.org/education/take-care-texas-video-contest>.

The Texas Commission on Environmental Quality's [Take Care of Texas K – 5 Kids Art Contest](#) starts **January 3** and the students that submit the best art can win a tablet or laptop. The contest theme this year is RECYCLING!



SELF-PACED PBI COURSE OPPORTUNITIES

UTeach Professional Development offers **two self-paced courses** focused on incorporating project-based instruction in blended learning classrooms. The courses are developed by master teachers and professors at The University of Texas at Austin's UTeach Institute. Through a partnership with TEA, course fees are reimbursed to districts upon completion through August 2025. You will find information on the project-based instruction courses and how to enroll [here](#).



LLS Scholarship for Blood Cancer Survivors

The LLS Scholarship for Blood Cancer Survivors provides up to \$7,500 to cover tuition for virtual or in-person vocational, trade, two-year, or four-year undergraduate education for one year. [READ MORE](#)

TEXAS RURAL EDUCATION ASSOCIATION

7415 Southwest Pkwy Bldg 6, Ste 500 #243 | Austin, TX 78735

Bill Tarleton
Executive Director
tel: 254.602.2056
btarleton@txrea.com



Bonnie Walker
Director of Operations
tel: 512.415.1646
bwalker@txrea.com



Kasey Hyde
Coordinator of Member Services
tel: 877.567.8732 ext. 3
khyde@txrea.com





TREA DIAMOND SPONSORS



CONNECT WITH TREA

FACEBOOK

TWITTER

LINKEDIN